

DATA SHEET

Platforms Supported			
	Spacebus 2000/3000/4000, Satelcom Proteus (Globalstar/O3b)		
	Eurostar2000/2000+, Eurostar 3000		
	BSS376/BSS601/BSS702		
	SS/L 1300		
	A2100		
	DS-2000		
	Star-2		
	Luxor		
	Ekspress		
	I-3000		
Customers			
			
			
			
			
			
			
			
			

Other GMV products for satellite operations:

hifly **flexplan**
magnet **smart payload**



For more information about focussuite please visit us online at:

www.focussuite.com

Email Us:
marketing.space@gmv.com

focus SUITE

A product by



Issac Newton, 11 P.T.M. Tres Cantos 28760
 Madrid SPAIN
www.gmv.com

 www.facebook.com/infoGMV
 @infoGMV

© GMV, 2013

focus SUITE

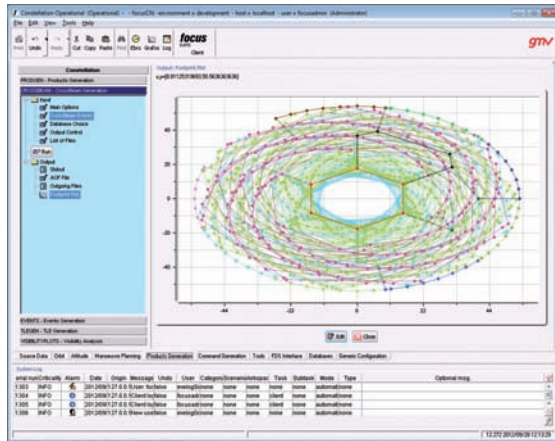
A UNIQUE PRODUCT LINE FOR
**ALL FLIGHT DYNAMICS
 OPERATIONS**



WHAT IS focussuite ?

focussuite GMV's advanced off-the-shelf flight dynamics solution for satellite operations. **focussuite** covers the needs for both the **end-user operations** and the flight dynamics system **developer configuration and analysis**.

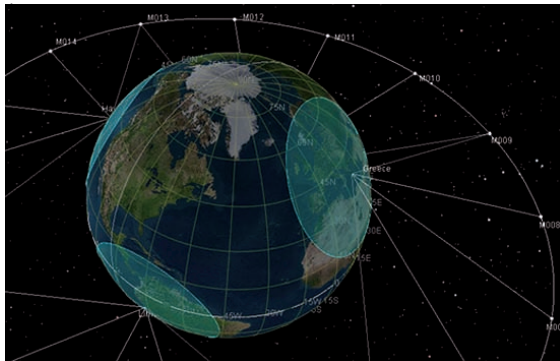
- Sets a new standard for COTS products by providing advanced functionality, reliability, flexibility and user friendliness.
- Framework oriented to minimize technical and programmatic risks, while greatly improving the efficiency of operations and reducing the risk of human error.



focussuite Human-Machine Interface

HUMAN-MACHINE INTERFACE

focussuite provides an ergonomic and efficient Human-Machine Interface optimized for flight dynamics operations. The **focussuite** HMI includes a custom toolkit for rapid Graphical User Interface development and maintenance, providing enhanced graphical plotting capabilities and a logging system.



focussuite 3D display

SUITE OF PRODUCTS

The **focussuite** family consists of products and tools for different orbital regimes and mission phases. All focussuite products and tools share the same reference architecture and many common components.

OPERATIONS PRODUCTS:

focus
GEO Full life cycle support of geostationary satellite operations.

focus
LEOP Flight Dynamics System tools for satellite launch and early orbit phase operations, including transfer strategies.

focus
LEO Flight Dynamics System tools for low and medium earth orbit satellites.

focus
CN Satellite constellation management support.

MISSION ANALYSIS SUPPORT

focus
MATOOL Definition, assessment and optimization of station keeping strategies for geostationary satellites.

focus
CONSIGO Multi-mission tracking scenario analysis to assess expected orbit determination accuracies.

focussuite KEY FEATURES

OPEN

focussuite provides a well-documented API to enable execution of the system functions from external systems.

EXPANDABLE, SCALABLE, ADAPTABLE

focussuite third party software, hardware and OS independence allows ease of integration and maintenance. It is possible to perform quick system updates and module upgrades without the need of performing a system rebuild. **focussuite** is portable amongst Windows, Linux and Unix operating systems.

ERGONOMIC USER FRIENDLY DESIGN

focussuite offers a visual HMI with advanced graphical capabilities including: Gantt charts, XY plotting, 2D and 3D displays.

FULL LIFECYCLE SUPPORT

focussuite supports each mission phase: Mission preparation and analysis, Launch, Early Orbit Operations, On-Orbit Operations and End of Life and De-Orbit Operations.

MULTI-MISSION, MULTI-USER, MULTI-ENVIRONMENT

focussuite supports multi-mission operations in any orbital regime including GEO, LEO, MEO and constellation missions.

RELIABLE

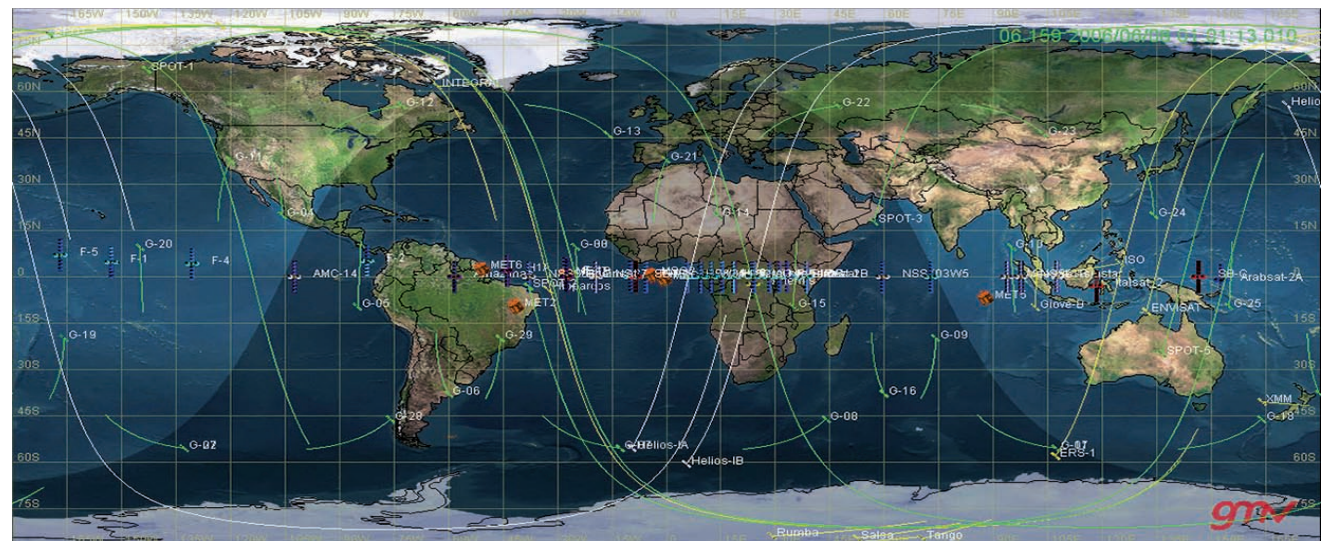
focussuite is database driven, providing multi-tiered privilege-based data access mechanisms. The system allows concurrent access and simultaneous operational scenario analysis. Any operation can be undone and redone at the user request.

HIGHLY EFFICIENT

focussuite provides automation capabilities of flight dynamics operations.

100% FLIGHT PROVEN

More than 139 operational missions and counting.



focussuite 2D display of the missions supported by **focussuite**